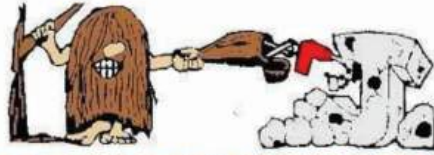




# **JOHNSON QUARRIES**

**The Very Finest Quality  
Pennsylvania Bluestone, Est. 1980**



**JOHNSON QUARRIES**

**PA BLUE STONE**

PO Box 136 LeRaysville, PA 18829



**Johnson Quarries, Inc.**  
*State Approved Aggregates*

570-744-1284  
15962 Route 467  
Stevensville, PA 18845

Please visit our website  
for a preview of our business and products.

**[www.johnsonquarries.com](http://www.johnsonquarries.com)**



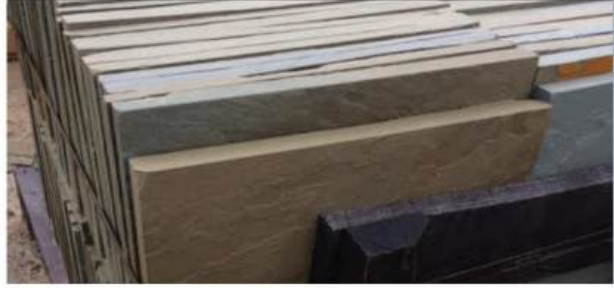
Johnson Quarries, Inc. is a family owned and operated bluestone mining company, founded by Jerry Johnson Sr., in 1980. Johnson Quarries operates several quarries in the heart of the beautiful Endless Mountains in Northeastern Pennsylvania. Our goal is to produce the finest quality bluestone products available.

Thank you for considering us as your Pennsylvania bluestone supplier!

**1" Full Color Thermal**



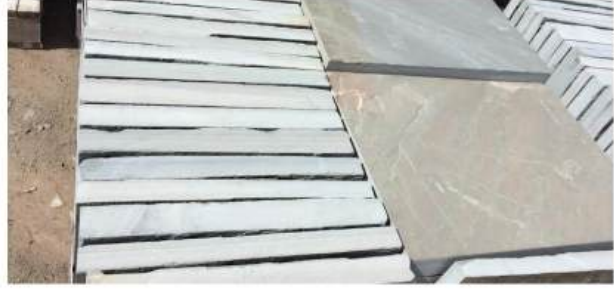
**1" Full Color Natural Cleft**



**1.5" Full Color Thermal**



**1.5" Full Natural Cleft**



**1" Blue Thermal**



**1" Blue Natural Cleft**



**1.5" Blue Thermal**



**1.5" Blue Natural Cleft**



## **DIMENSIONAL PATTERN**

(nominal size, cut with 1/2" joint)

### **Solid Size Pallets of:**

12"x12", 12"x18", 12"x24", 12"x30", 12"x36", 18"x18",  
18"x24", 18"x30", 18"x36", 24"x24", 24"x30", 24"x36"

Mixed Pallets include random sizes  
& quantities of any sizes listed above

1" Full Color



1.5" Full Color



1" Blue



1.5" Blue



## STANDUP/IRREGULAR FLAGSTONE

1" & 1.5" Natural Cleft

## Blue Thermal Sills



## Blue Thermal Treads



# BLUE THERMAL SILLS & TREADS

Thermal top, 1 long & 2 short  
Tread Widths: 12", 14", 16", 18", 20", 24"  
Sill Widths: 3", 6", 8", 10"  
Lengths: 3', 4', 5', 6', 7', 8'

**Thin Full Color Colonial**



**Thick Full Color Colonial**



**Thin Full Color Colonial Garden Path**



**Colonial Steppers**



**Thick Full Color Colonial Garden Path**



**STACKED  
STONE**

**Thick Blue G Wall**



**Thin Blue G Wall**



**Thick Full Color G Wall**



**Thin Full Color G Wall**



**1.5" & 2" Gauged Colonial**



**2" x4" Gauged Wallstone**



**SNAPPED  
WALLSTONE**

**6" Gauged Wallstone**







**SPECIALTY  
PRODUCTS**



Thin



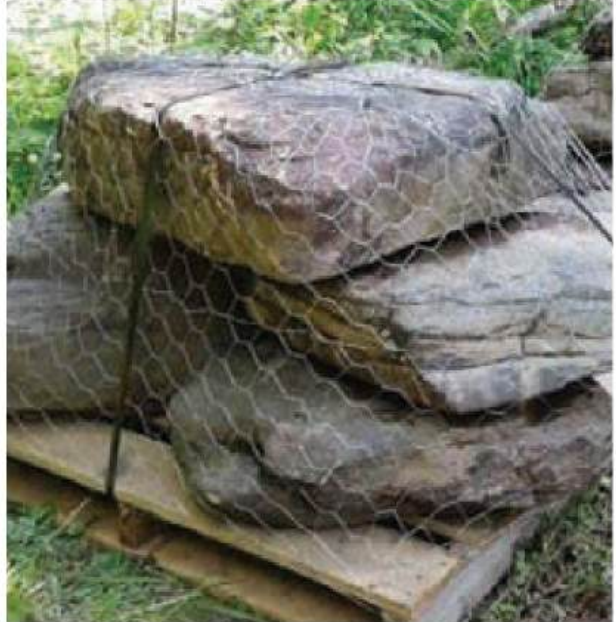
Heavy



Garden Path



Steppers/Boulders



# FIELDSTONE

**Flats**



**Rounds**



**Aspen Pebbles**



# CREEKSTONE

## 6" Thermal Steps



Thermal top  
1 long 2 short

Widths:  
12", 14", 16", 18"

Lengths:  
3', 4', 5', 6', 7', 8'

## 6"-8" Natural Snapped Steps



Natural Cleft top  
Snapped Edges

Widths:  
12", 14", 16", 18", 20", 24"

Lengths:  
3', 4', 5', 6'

## 6" Sawn Steps with Natural Face



# STEPS

1.5" Irregular



2" Irregular



1.5" Garden Path



2" Garden Path



2" Assorted



12"x12"x2"



12"x18"x2"



6"x6"x2"



6"x12"x2"



Belgium Blocks



# TUMBLED

# VENEER

Thin Blue



Thin Full Color



Corners



4"x4" Blue Edgers



4"/Full Bed Full Color



4"/Full Bed Blue



## BLUE THERMAL SLABS

Thermal top  
Thickness: 1.5", 2", 3"



# CRUSHED STONE

AASHTO C57 (2B)



Conservation District DSA



PennDOT 2RC



AS3 Anti Skid



PennDOT 2A



R3



R4



R5-R6-R7



R8





**JOHNSON QUARRIES**  
**PA BLUE STONE**  
PO Box 136 LeRaysville, PA 18829

P.O. Box 136  
LeRaysville, PA 18829

